

SIRMOOR

1879-80

1 PICE VALUES : GREEN ON WOVE, BLUE ON LAID

P. 11½



↓

↑ DISPLACED PERF.

FORGERY CLOSELY IMITATING THE ABOVE ISSUE BUT WITH PARTIAL PRINTED PERF. LIKE THE FOLLOWING ISSUE. PERF. 12. WOVE PAPER



1892

THIS ISSUE WAS PRINTED IN CALCUTTA WITH THE INTENTION OF SELLING THEM TO COLLECTORS. THERE WAS LITTLE DEMAND AND SO THEY WERE PUT TO POSTAL USE! THEY WERE COPIED, COMPLETE WITH PERFORATION FROM AN ILLUSTRATION IN A DEALER'S CATALOGUE. PERF. 11½



DISPLACED PERF.

IMPERF. POSSIBLY GENUINE

SIRMOOR

1885 (APR.?)

THE SECOND ISSUE OF THIS STATE WAS LITHOGRAPHED BY WATERLOW & SONS AND DEPICTS THE RAJA SIR SHAMSHER PARKASH. SEVEN DISTINCT ISSUES OF THESE STAMPS APPEARED BETWEEN 1885 AND 1896 THESE WERE PREPARED FROM SEVERAL DIFFERENT PLATES OF EACH VALUE.

THE FIRST ISSUE :

ALL 4 VALUES APPEARED IN EARLY 1885 EACH PRINTED FROM PLATES OF 70 STAMPS ARRANGED IN 10 COLUMNS EACH OF 7 DISTINCT TRANSFER SUBJECTS (i) TO (vii).

THE 3 PIES VALUE

(i)



MARK
UNDER 'S'

(ii)



(iii)



IRREGULAR OVAL

(iv)



TINY BREAK
OVER 'E'

(v)



(vi)



(vii)



FIRST ISSUE CONT.

THE 6 PIES VALUE

(i)



DOT
UNDER 'IE'

(ii)



BREAK
NEAR
'RM'

(iii)



DOT
IN 'S'

Protruding
Photo of B.L.H.
of the upper
structure of
B.L.H. one

(vi)



(v)



NOTCH
NEAR
'OR'

(vii)



THE 1 ANNA VALUE

SUBTYPE (ii)

(iii)



WHITE LINE JOINS
BLADES B.L.H.O.

WHITE LINE
THICK OVER
'ONE'



WHITE
FLAW



SPOT OCCURRING
ONLY AT R.H. END
OF ROW OF SUB. (ii)

(v)



TINY
NOTCH

(vi)



(vii)



WHITE
PROTECTION

FIRST ISSUE CONT.

THE 2 ANNA VALUE

(i)



(ii)



(iii)



BULGE
UNDER 'O'

(iv)



TINY
BREAK

GENERALLY
MINUTE COL.
DOT IN VERT
OF 'T' OF '2'
OCCASIONALLY
1st O OF 'OO'
LIKE 'Q'



(vii)



WHITE
NOTCH

POSTMARKS OF THE FIRST ISSUE

(i)



(v)



(vii)



1888

THE SECOND ISSUE

IN THIS YEAR, NEW STONES WERE PREPARED FOR THE TWO LOWER VALUES. THE PRINTING WAS AGAIN IN SHEETS OF 70 BUT THIS PRINTING WAS ARRANGED IN SETS OF 4 DIFFERENT HORIZONTAL TRANSFER SUBJECTS (i) TO (iv). THE 6 PIES VALUE WAS IN A LESS BLuish GREEN THAN THE FIRST ISSUE AND THE 3 PIES COLOUR WAS CHANGED TO ORANGE.

THE 3 PIES VALUE



THE 6 PIES VALUE



POSTMARKS OF THE 2nd ISSUE



1891 (OCT.)

THE THIRD ISSUE (RARE)

NEW STONES WERE AGAIN MADE FOR THE 3 LOWER VALUES, THIS TIME FROM 5 HORIZONTAL TRANSFER SUBJECTS (i) TO (v). THERE WAS ONLY A VERY SMALL PRINTING THEN THE STONES WERE DESTROYED WHILE THE STAMPS WERE BEING SENT TO SIRMOR.

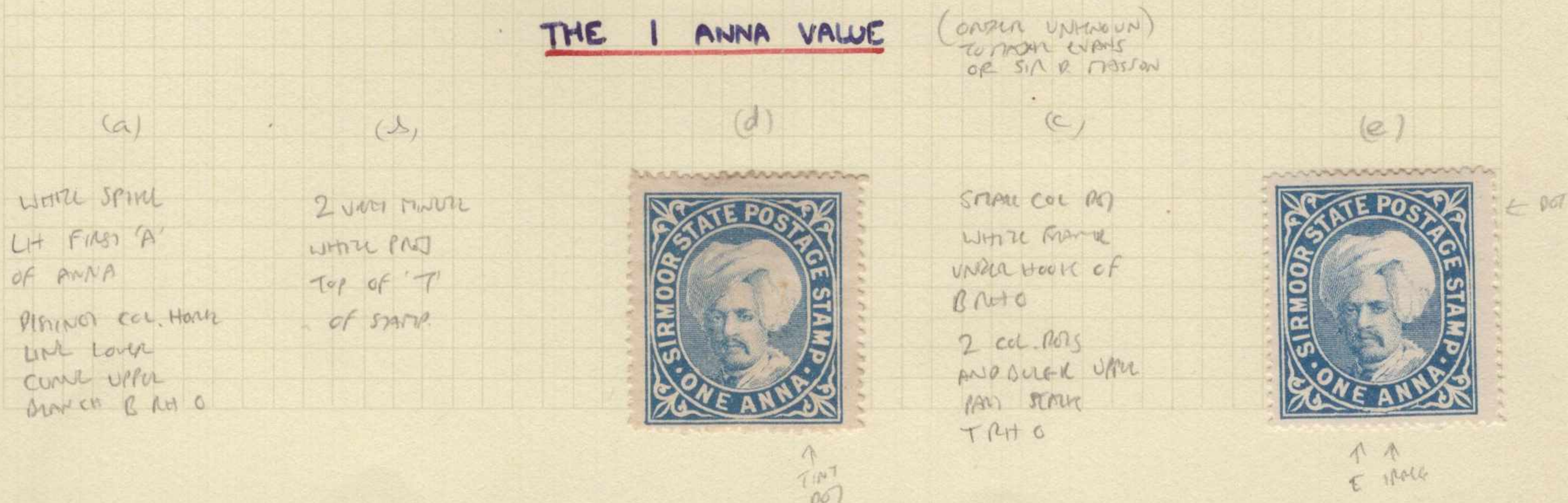
THE 3 PIES VALUE



THE 6 PIES VALUE



THE 1 ANNA VALUE



SIRMOOR

1891 (Nov.)

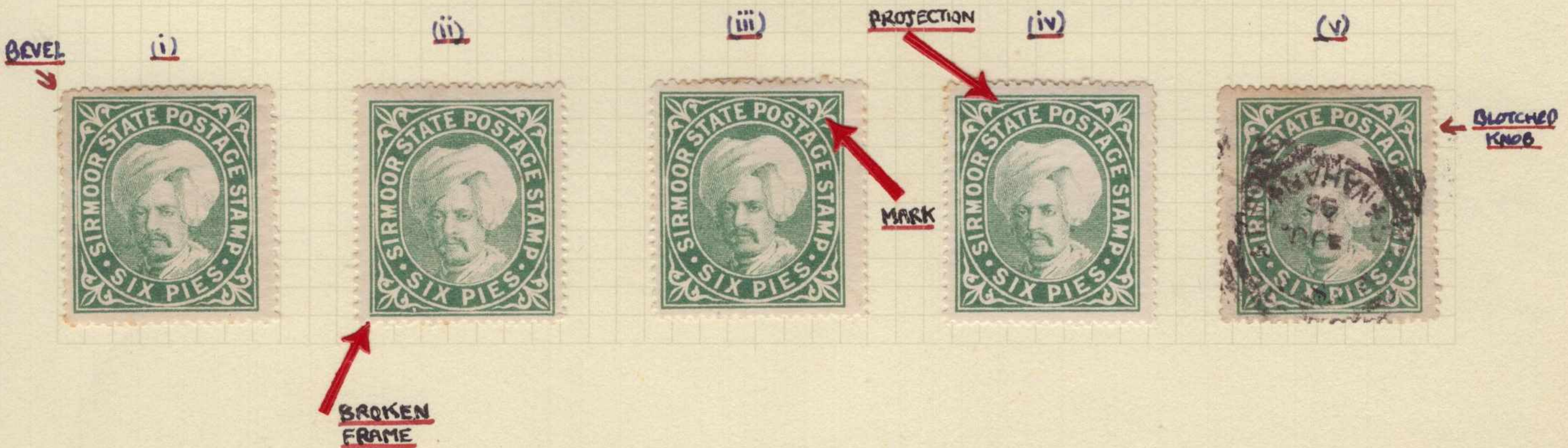
THE FOURTH ISSUE.

THE 3rd ISSUE STONES WERE DESTROYED IMMEDIATELY AFTER THE SMALL PRINTING WAS COMPLETE AND NEW ONES HAD TO BE PREPARED A FEW DAYS LATER WHEN A NEW ORDER ARRIVED. THE FOURTH ISSUE APPEARED ONLY ONE MONTH AFTER THE THIRD AND CONSISTED OF THE 3 PIES VALUE IN BOTH COLOURS (ORANGE BEING SCARCE), THE 6 PIES AND 1 ANNA VALUE IN DISTINCT SHADES. THERE WERE AGAIN 5 TRANSFER SUBJECTS. ((i) TO (v)).

THE 3 PIES VALUE



THE 6 PIES VALUE



FOURTH ISSUE CONT.

THE 1 ANNA VALUE

(i) put
up for post
↓

(ii)

(iii)

(iv)

(v)

PRO. INSIDE
pt. o of 'od'
TINT NOTCH IN
RH WOE UPPER
STAMP B LHO

GAP IN THIN
RH FRAME
OPPOSITE 'AT'
COL SAEEN
ON HORIZ STRAIN
OR T LHO

LOWER PART
O RHO BWOCH
WHITE FLAW
NUMBER JOINED
BASE STRAIN
TO FRAME
WHITE PRO OFF.
A OF POST.

COL. NOTCH
IN STRAIN OF
T RHO.
UPPER WOOD
OF O MHO
JOINED WITH
THIN CROWN
NECK

POSTMARKS OF THE FOURTH ISSUE

(iv)



(iii)



(iii)



(iv)



(iv)



(v)

SIRMOOR

1892 (DEC.)

THE FIFTH ISSUE

NEW STONES WERE AGAIN PREPARED FOR ALL FOUR VALUES.
UNLIKE THE OTHER PRINTINGS THE BACKGROUND LINES ABOVE
THE HEAD WERE ROUGH AND UNEVEN. THE TRANSFERS WERE IN PAIRS.



TALL
'H'

E



(i)

DOT
OVER
'T'

(ii)

DOT
IN 'A'



(i)

(ii)

NOTCH
OVER
'ES'

WHITE
FLAW

S
COLOURED
MARK

(i)

(ii)



POSTMARKS ON THE FIFTH ISSUE

CIRCULAR DATE STAMPS



DARK SHADE



SQUARED CIRCLE



OCTAGONAL



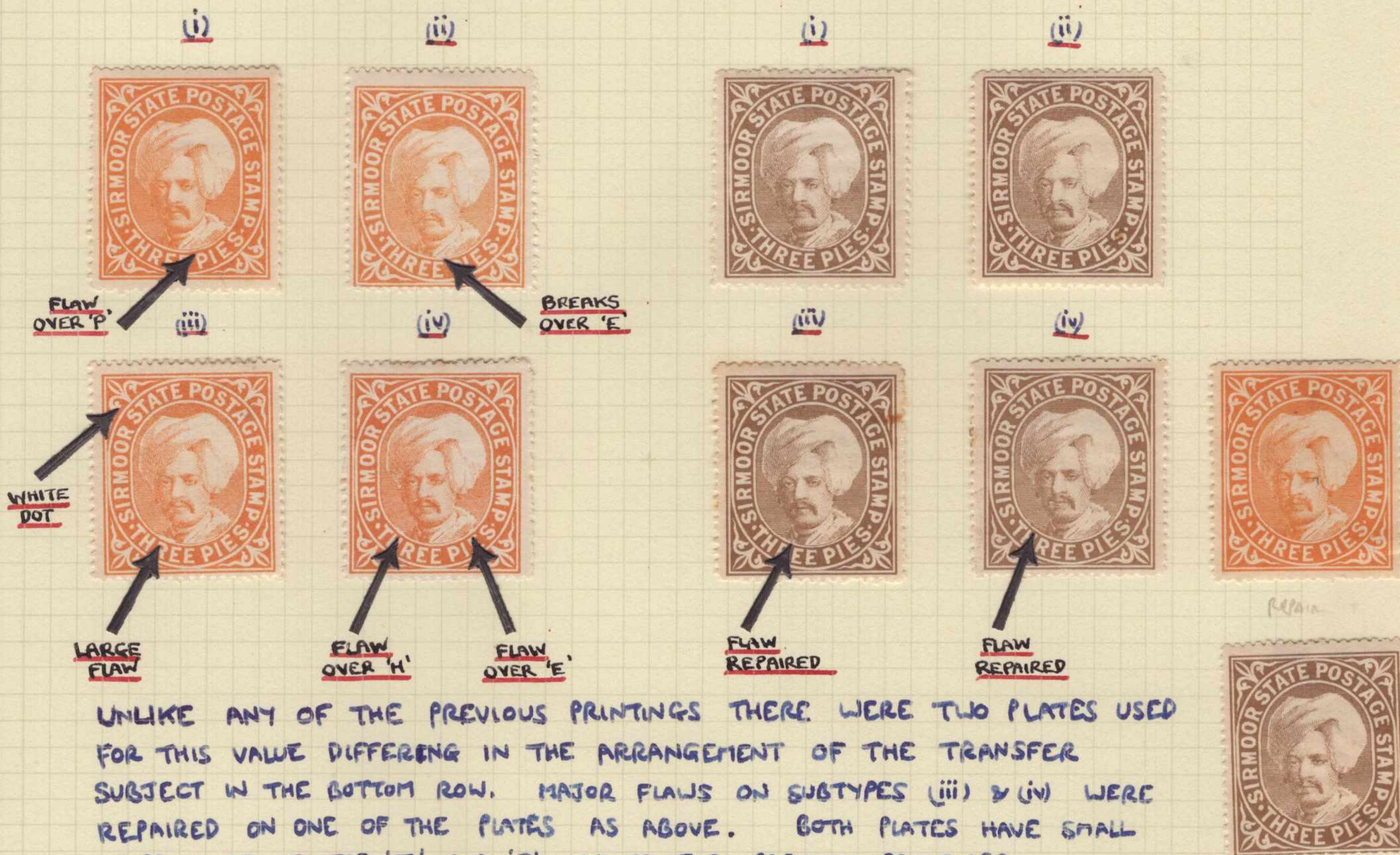
SIRMOOR

1896 (JULY)

THE SIXTH ISSUE

NEW STONES WERE AGAIN PREPARED FOR ALL 4 VALUES, WITH BOTH COLOURS OF THE 3 PIES VALUE. THESE WERE ALL PREPARED FROM TRANSFER SUBJECTS IN SQUARE BLOCKS OF FOUR (i) TO (iv)

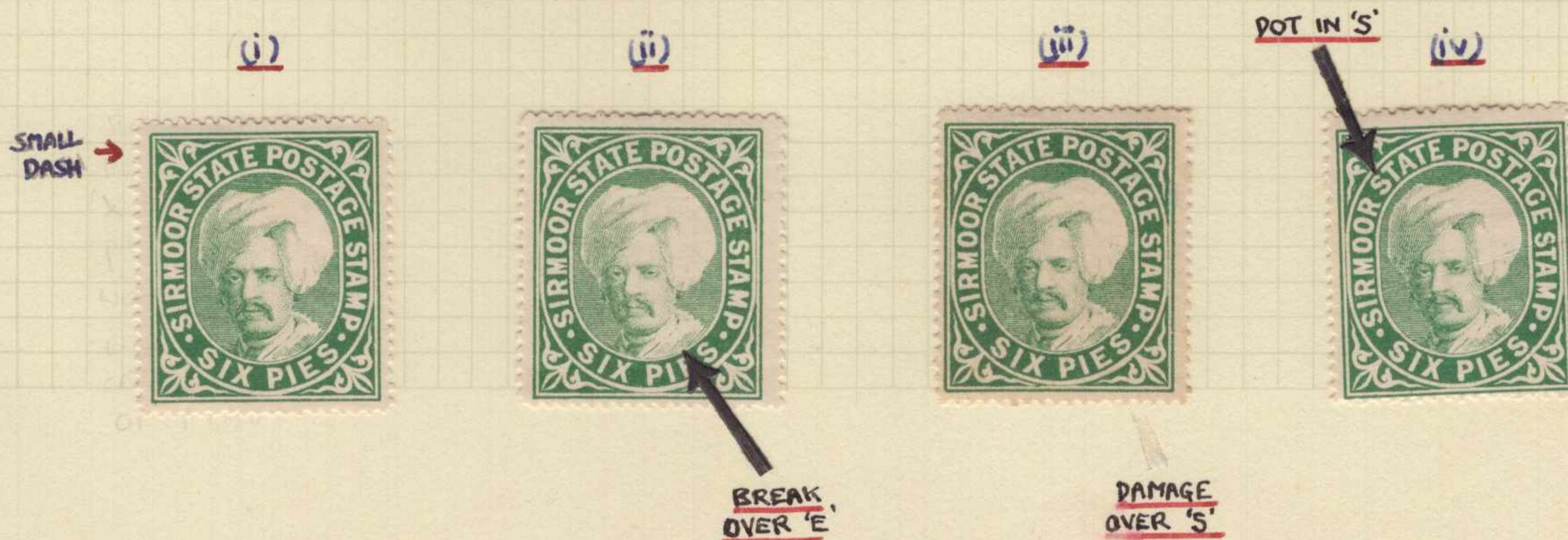
THE THREE PIES VALUE



UNLIKE ANY OF THE PREVIOUS PRINTINGS THERE WERE TWO PLATES USED FOR THIS VALUE DIFFERING IN THE ARRANGEMENT OF THE TRANSFER SUBJECT IN THE BOTTOM ROW. MAJOR FLAWS ON SUBTYPES (iii) & (iv) WERE REPAIRED ON ONE OF THE PLATES AS ABOVE. BOTH PLATES HAVE SMALL STOPS CLOSE TO THE 'T' AND 'S' UNLIKE THE PREVIOUS PRINTINGS

THE SIX PIES VALUE

IN THIS PRINTING THE STOPS WERE MUCH NEARER THE 'S' OF 'SIRMOOR' AND 'P' OF PIES



SIXTH ISSUE CONT.



POSTMARKS ON 6th ISSUE



THERE WAS ALSO A SEVENTH ISSUE BUT THIS IS ONLY KNOWN OVERPRINTED ON S.S.S.

SIRMOOR

1895-99

RECESS PRINTED BY WATERLOW & SONS

VARIOUS PERFS.

(a) PERF. 14½-15



(b) P. 12½-14 x 14



(c) P. 13 x 14



1899

RAJA SIR SURENDAR BIKRAM PARKASH

VARIOUS PERFS.



PERF. 15

PERF. 14

P. 12 x 14

SIRMOOR OFFICIALS

1892

TYPE 36 (SG. TYPE 13)

18½ x 17, 19, 20 or 21mm

IN BLACK ONLY ON ALL VALUES OF PRINTING V OR THE 6P IV

Nos. 1, 2, 3 & 4 OF THE 10 WERE 17mm. WIDE.



V(ii)

No. 2



IV(ii)

No. 2



V(i)

No. 1



V(ii)

No. 2



V(i)

No. 3

NO STOP LOWER 'S'
(LATE STATE)



V(ii)

No. 4

BROKEN 'O' IN 'ON'



V(ii)

No. 4

Nos. 5, 6, 7 & 8 OF THE 10 WERE 19mm. WIDE.



V(i)



V(i)

No. 5 or 7



V(ii)

No. 6

BROKEN FIRST 'S'



V(ii)

No. 6



V(i)

No. 5 or 7

No. 9 WAS 20mm AND No. 10 21mm. WIDE.



V(i)

No. 9



V(ii)

No. 10



V(i)

No. 9



V(ii)

No. 10

SIRMOOR OFFICIALS

MACHINE - PRINTED

1890 ISSUE

TYPE 1 (S.G. TYPE 11)

HEIGHT 20 x WIDTH 16½ mm

10 TYPES ON 6P PRINTING II AND 1A PRINTING I IN RED
OR 2A PRINTING I IN BLACK



II (i)



II (iv) No. 3?



II (iv) No. 7
1st S & STOP REVERSED



I (i)

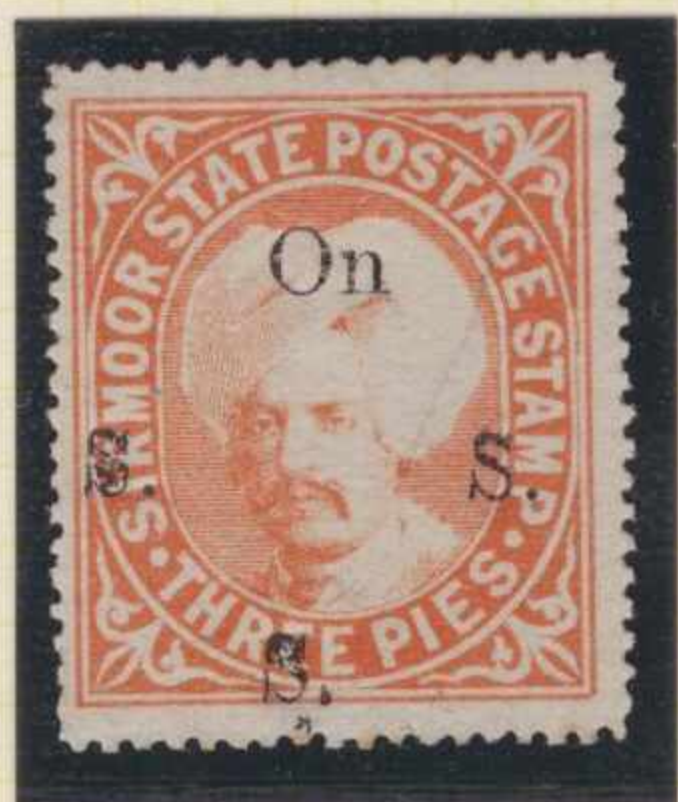
I (vi)

1891 ISSUE

TYPE 2a (S.G. TYPE 12)

SMALLER LETTERS 20 x 19 mm.

IN BLACK ON 3P II, 6P II, 1A I, 2A I
OR RED ON 6P II, 1A I,



II (iii)



II (i)



II (iv)

I (iv)



II (i)



II (iii)



TYPE III d?

TYPE 2b (S.G. TYPE 12)

DIFFERENT FONT

18½ x 18½ mm

MAROON OVP.



II (i)



II (iv)



SIRMOOR OFFICIALS

No.3 TYPE OF THE MACHINE PRINTS USED A SLIGHTLY SMALLER FOUNT THAN TYPE 2
AND OCCURRED IN FIVE DIFFERENT SETTINGS FROM 1892 TO 1897

1892 ISSUE

TYPE 3a (S.G. TYPE 13)

18-18½ x 17mm.

IN BLACK ON 3P III & V, 1A IV, 2A I
OR RED ON 6P II, III & IV, 1A I & IV



III (i)



III (ii)



III (iv)



III (v)



I (vi)



II (i)



III (iv)



IV (i)



IV (ii)



IV (iii)

No.3 OF THE 10 TYPES - INVERTED LEFT 'S'



I (vii)



V (i)



IV (iii)



I (iii)

No.9 OF THE 10 TYPES - NO STOP AFTER LOWER 'S'



III (iv)



I (iv)



IV (v)

HANDSTAMPED OVERPRINTS

1894-96 : VARIOUS TYPES OF THESE WERE IN USE. IT IS BELIEVED THAT THEY WERE MAINLY APPLIED TO BROKEN SHEETS WHICH COULD NOT EASILY BE MACHINE STAMPED. THEY ARE GENERALLY RECOGNISABLE BY THE IRREGULAR LETTERING, SINCE 'ON' AND EACH OF THE S'S WERE STRUCK SEPARATELY AND NOT AS A BLOCK.

TYPE E : 1894 HAND-STAMP , NO STOPS , 'ON' AS ONE UNIT.



V 1 9c Narrow 'O'



V 1 9c

INVERTED S's



NARROW 'O' VI 9c



WIDE 'O' VI 9a



WIDE 'O' VI 9a



LOW 'O' VI 9a

OTHER HANDSTAMPS WITH LARGE LETTERING.

1896

1896



SG 102? VI 9c
14



SG 99? VI 4R.
SG 90
14



VI 4.
SG 103
15



SG 101 VI
SG 102
15



SG 106 VI
SG 105
15

V₁(iv)

THE 1896 TO 1900. OVERPRINTS WERE MACHINE-PRINTED LOCALLY WITH LARGE LETTERS :- TYPE D, MANY SETTINGS EXIST.

THE 1896 SETTING : OVERPRINT 25 mm HIGH ON PRINTINGS V AND VI



CORONA VARIETY
4c (No 5)



4c ord



4d



4c ord



4c



V₁(i)

V₁

VI₄

V₂

V₂

THE ABOVE SETTING IS ALSO DISTINCT IN THAT A VERTICAL LINE THROUGH THE 'O' PASSES WELL TO THE LEFT OF THE LOWER 'S'

ALL LARGE STAMPS

ANOTHER EARLY (1896?) SETTING : 23 x 19 1/4 mm ON PRINTING V



4c

V₂



4c 25x 25 1/2

V₁(i)

THE LAST LOCAL MACHINE PRINTED SETTING (1900?) :- 23 x 17 3/4 mm. THE TOP SERIFS OF THE S'S SLOPE INSTEAD OF BEING VERTICAL.

SMALL STAMPS



VI₁
7b



V₂
7b



V₁ SUB-SETTING
22 mm HIGH

7a



V₂
7b

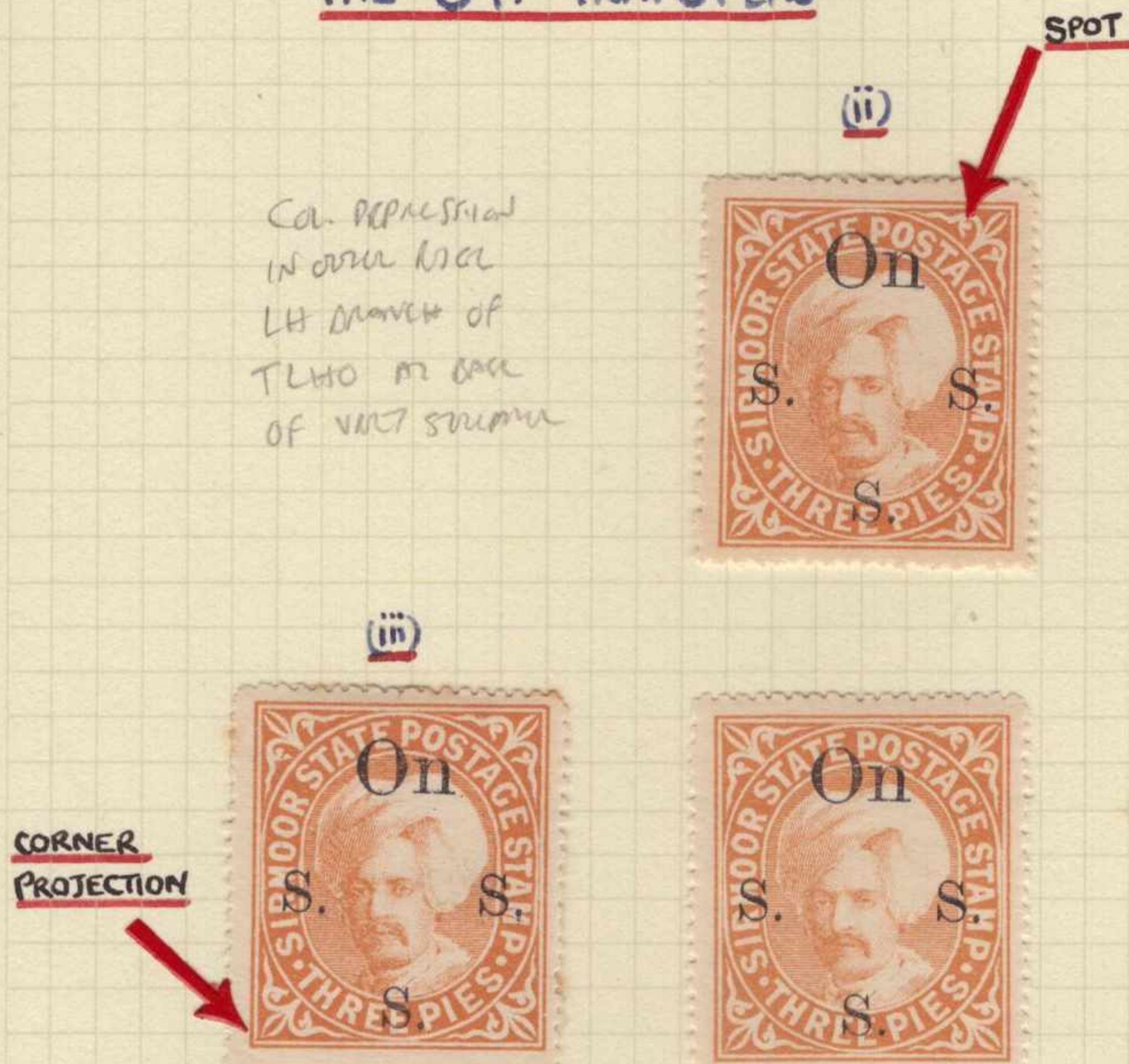


VI₁(2) 7b

1900 (MAY)

DURING THIS MONTH, THE SEVENTH PRINTING OF ALL 4 VALUES APPEARED. THIS PRINTING WAS OVERPRINTED BY WATERLOW AND SONS IMMEDIATELY AND WAS NOT USED AT ALL WITHOUT THE SERVICE OVERPRINT. THE TRANSFERS OF THE BASIC STAMPS WERE IN BLOCKS OF 4 AND THE OVERPRINT MEASURED $21\frac{1}{2}$ mm \times $17\frac{1}{2}$ OR 17 mm.

THE 3 P. TRANSFERS



THE 6 P. TRANSFERS



THE 1 A. TRANSFERS



THE 2 A. TRANSFERS

